



BOSCH

Invented for life

BVMS - Demonstration (JPEG) Cameras

Author: Verhaeg Mario (BT-VS/PAS4-MKP)
Date: 30 March, 2020

1 Document information	3
1.1 Version history	3
2 Introduction	4
3 Finding suitable cameras	5
4 Configuration	6
5 Validation	7

1 Document information

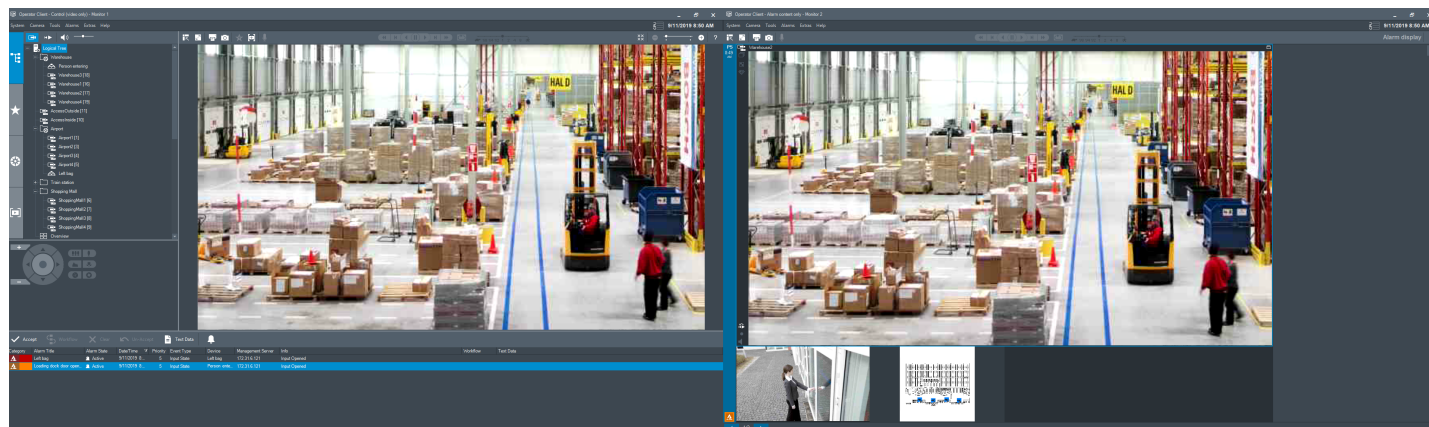
Project	BVMS
Reference	n/a
Version	1
Last modified	 16 March 2020

1.1 Version history

Version	Date	Who	Description
1	2020-03-13	Mario Verhaeg	BVMS 10.0.1 upgrade of document.

2 Introduction

Demonstrating a video surveillance system typically requires a couple of cameras. However, when you only have a couple of cameras, the screen can look boring and empty. Did you know you can use the video streaming gateway to pull in any online JPEG picture as a camera into BVMS? This makes your demonstration more interesting! Additionally, you can set-up your own webserver and host customer JPEG images yourself. You can find a warehouse example below, fully based on JPEG based static images.



3 Finding suitable cameras

You can use almost any JPEG image as a virtual camera to fill up the screen-space. As we are based in Munich, I have tried to find three JPEG-based webcams that refresh their image every minute or so. Winklmoosalm is a beautiful area for skiing and hiking. The Marienplatz is the central square in the inner city of Munich, and the Isar is the river flowing through Munich. You can also set-up your own (internal) web-server and host customer JPEG files on the webserver.

<http://www.winklmoosalm.de/webcam.php>

<https://www.muenchen.de/sehenswuerdigkeiten/webcam.html>

4 Configuration

Add a video streaming gateway to the BVMS configuration (under the video recording manager node). Add JPEG cameras to the video streaming gateway. For demo purposes we recommend to reduce the frame rate (ips) to 1.

Device Identification	
Name	Munich - River
URL:	https://app.muenchen.de/webcam/flaucher//WebcamMuenchen.com_exklusiv_fuer_muenchen.de.jpg

Credentials	
User name	
Password	
<input type="checkbox"/> Show password	

Properties	
Device properties	
Device type	JPEG
Interfaces	
Number of video input channels	1
Video Streaming Gateway settings	
Assigned Gateway channel(s)	1
Frame rate [ips]	1

Don't forget to add the cameras to the BVMS logical tree.

5 Validation

The operator client nicely shows the three selected cameras, and updates them when the source picture is updated.

